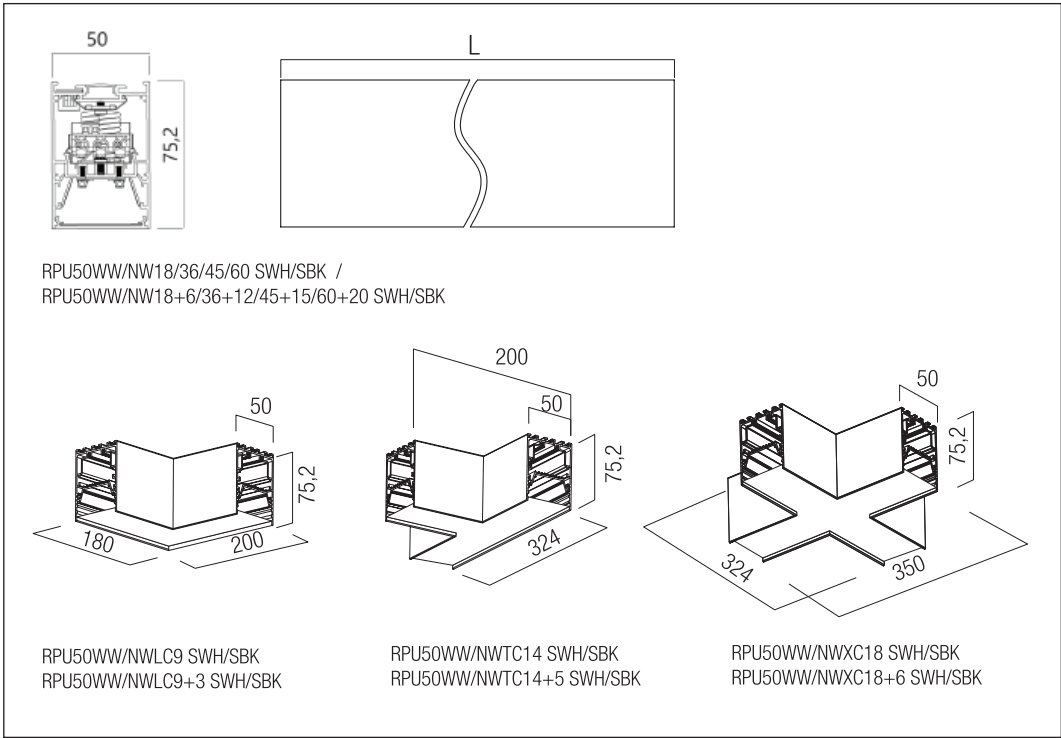
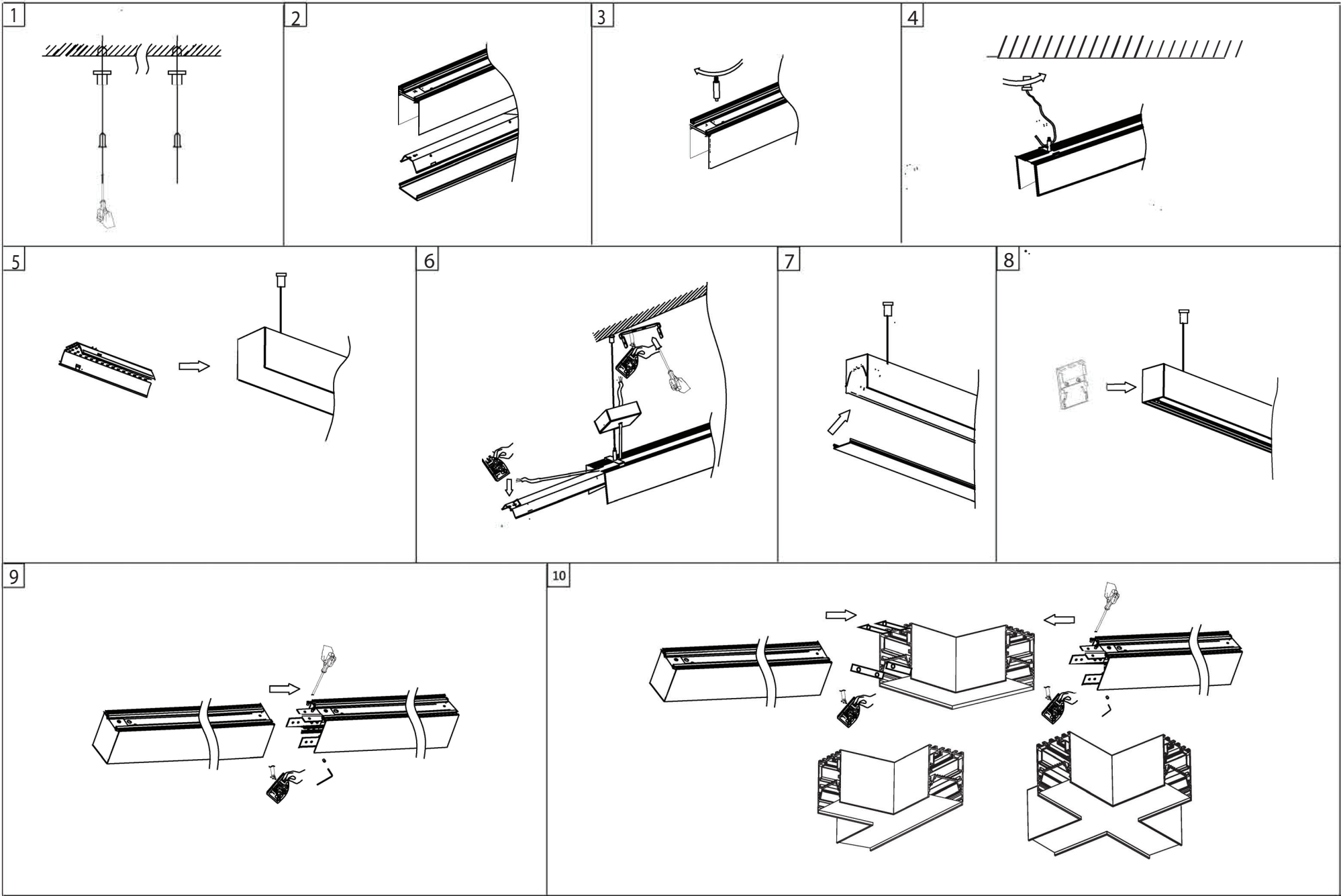


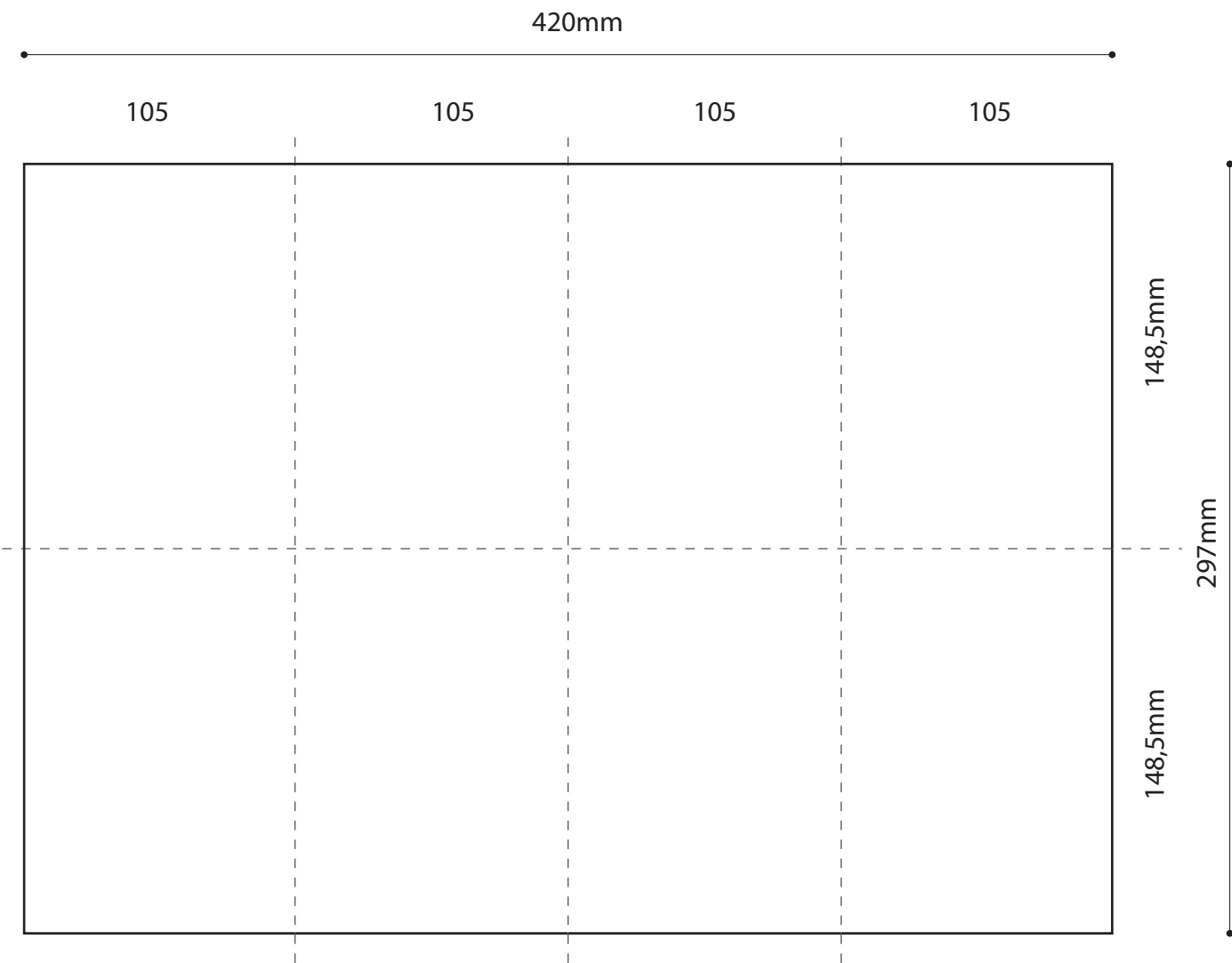
TECHNICAL FEATURES

Code	Type of LED	Power P(W)	Input voltage (V)	Color temperature of LED (K)	CRI	Working ambient temperature (°C)	Dimensions LxWxH (mm)	Weight (kg)	Energy efficiency class
RPU50WW/NW18 SWH/SBK	Linear LEDs modules	18W	220-240V AC	3000K / 4000K	90	-35 ÷ +45 °C	562 mm	1,15 kg	E/D
RPU50WW/NW36 SWH/SBK	Linear LEDs modules	36W	220-240V AC	3000K / 4000K	90	-35 ÷ +45 °C	1200 mm	2,70 kg	E/D
RPU50WW/NW45 SWH/SBK	Linear LEDs modules	45W	220-240V AC	3000K / 4000K	90	-35 ÷ +45 °C	1516 mm	3,25 kg	E
RPU50WW/NW60 SWH/SBK	Linear LEDs modules	60W	220-240V AC	3000K / 4000K	90	-35 ÷ +45 °C	1996 mm	4,34 kg	E/D
RPU50WW/NW18+6 SWH/SBK	Linear LEDs modules	18W + 6W	220-240V AC	3000K / 4000K	90	-35 ÷ +45 °C	562 mm	1,28 kg	E/E
RPU50WW/NW36+12 SWH/SBK	Linear LEDs modules	36W +12W	220-240V AC	3000K / 4000K	90	-35 ÷ +45 °C	1200 mm	2,85 kg	E/E
RPU50WW/NW45+15 SWH/SBK	Linear LEDs modules	45W +15W	220-240V AC	3000K / 4000K	90	-35 ÷ +45 °C	1516 mm	3,40 kg	E/E
RPU50WW/NW60+20 SWH/SBK	Linear LEDs modules	60W +20W	220-240V AC	3000K / 4000K	90	-35 ÷ +45 °C	1996 mm	4,49 kg	E/E
RPU50WW/NWLC9 SWH/SBK	Linear LEDs modules	9W	220-240V AC	3000K / 4000K	90	-35 ÷ +45 °C	180x200 mm	0,80 kg	E
RPU50WW/NWTC14 SWH/SBK	Linear LEDs modules	14W	220-240V AC	3000K / 4000K	90	-35 ÷ +45 °C	324x200 mm	1,10 kg	E
RPU50WW/NWXC18 SWH/SBK	Linear LEDs modules	18W	220-240V AC	3000K / 4000K	90	-35 ÷ +45 °C	324x350 mm	1,40 kg	E
RPU50WW/NWLC9+3 SWH/SBK	Linear LEDs modules	9W + 3W	220-240V AC	3000K / 4000K	90	-35 ÷ +45 °C	180x200 mm	0,90 kg	E/E
RPU50WW/NWTC14+5 SWH/SBK	Linear LEDs modules	14W + 5W	220-240V AC	3000K / 4000K	90	-35 ÷ +45 °C	324x200 mm	1,20 kg	E/E
RPU50WW/NWXC18 SWH/SBK	Linear LEDs modules	18W +6W	220-240V AC	3000K / 4000K	90	-35 ÷ +45 °C	324x350 mm	1,50 kg	E/E



OPEN SIZE 420x297mm

CLOSED SIZE 105x148,5mm



PRINT: 1 color (black) front and back side)

