

XTINY RECESSED|SURFACE

ARELUX S.R.L.
Alexei Tolstoy street, nr. 12, Bacău - 600093, ROMÂNIA.
Tel: +40 0234 514 492 / 546 620. Fax: +40 0234 546 677.

XT01SLC SWH

www.arelux.ro

10/2023

GENERAL INFORMATION / INFORMAȚII GENERALE / INFORMAZIONI GENERALI

Code	Finishing	Input voltage	Operating temp.	Weight
XT01SLC SWH	Sand white	48V DC	-30 ÷ +45 °C	0,02 kg

Description / Descriere / Descrizione

EN - Linear connector, mechanical and electrical, for two surface XTINY profiles.

RO - Conector liniar, mecanic și electric, pentru două profile aparente XTINY.

IT - Connettore lineare, meccanico ed elettrico, per due profili XTINY da superficie.

Housing / Corp / Corpo

EN - Housing of sand white polycarbonate.

RO - Carcasa din policarbonat de culoare albă, finisaj sablat.

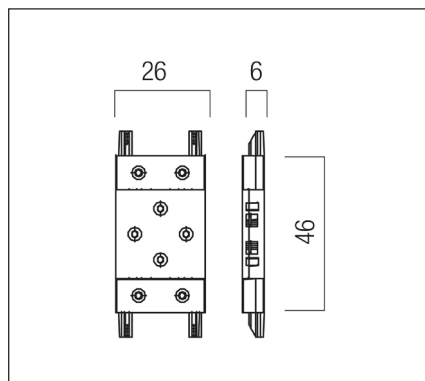
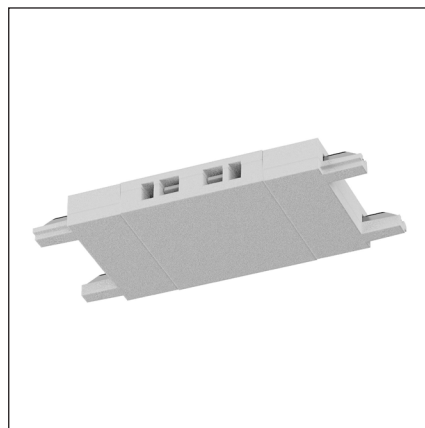
IT - Carcassa in policarbonato bianco sabbiato.

Electric gear / Aparataj de alimentare / Alimentazione

EN - Electrical circuit for 48V DC with two electrical contacts at each end.

RO - Circuit electric de 48V DC cu cate două contacte electrice la fiecare capăt.

IT - Circuito elettrico per 48V DC con due contatti elettrici a ciascuna estremità.



Standards: EN 60598-1:2015 + A1:2018, EN 60598-2-1:2020, EN 60529:1992 + A2:2013, EN 55015:2019 + A11:2020, EN 61000-3-2:2019, EN 61000-3-3:2013 + A1:2019, EN 61547:2009.